

LOWER BIG QUILCENE

Developing a suite of community-supported actions that increase flood protection and improve ecosystem functions while protecting critical shellfish resources in Quilcene Bay and meeting other community goals.

PROJECT SPOTLIGHT

| | | |
|---------------------------------------|-----------------------------|---------------------------------------|
| Proponent: Jefferson County | County: Jefferson | Requested Amount: \$908,616 |
| Legislative District: 24 | River: Big Quilcene | Matching Funds: \$227,154 |

Primary Objectives: Flood Risk Reduction; Salmon Habitat Restoration; Shellfish Viability; Recreational Access; Water Quality Improvement



2014 lower Big Quilcene flood damage.
Photo by Pat McCullough

Along lower Big Quilcene River, over a mile of roads and more than 30 homes are located within the 100-year flood zone, including Linger Longer Road, which provides the only access route for approximately 70 residences and Coast Seafood's' Quilcene hatchery. This important access route is subject to closures nearly every year due to flooding.

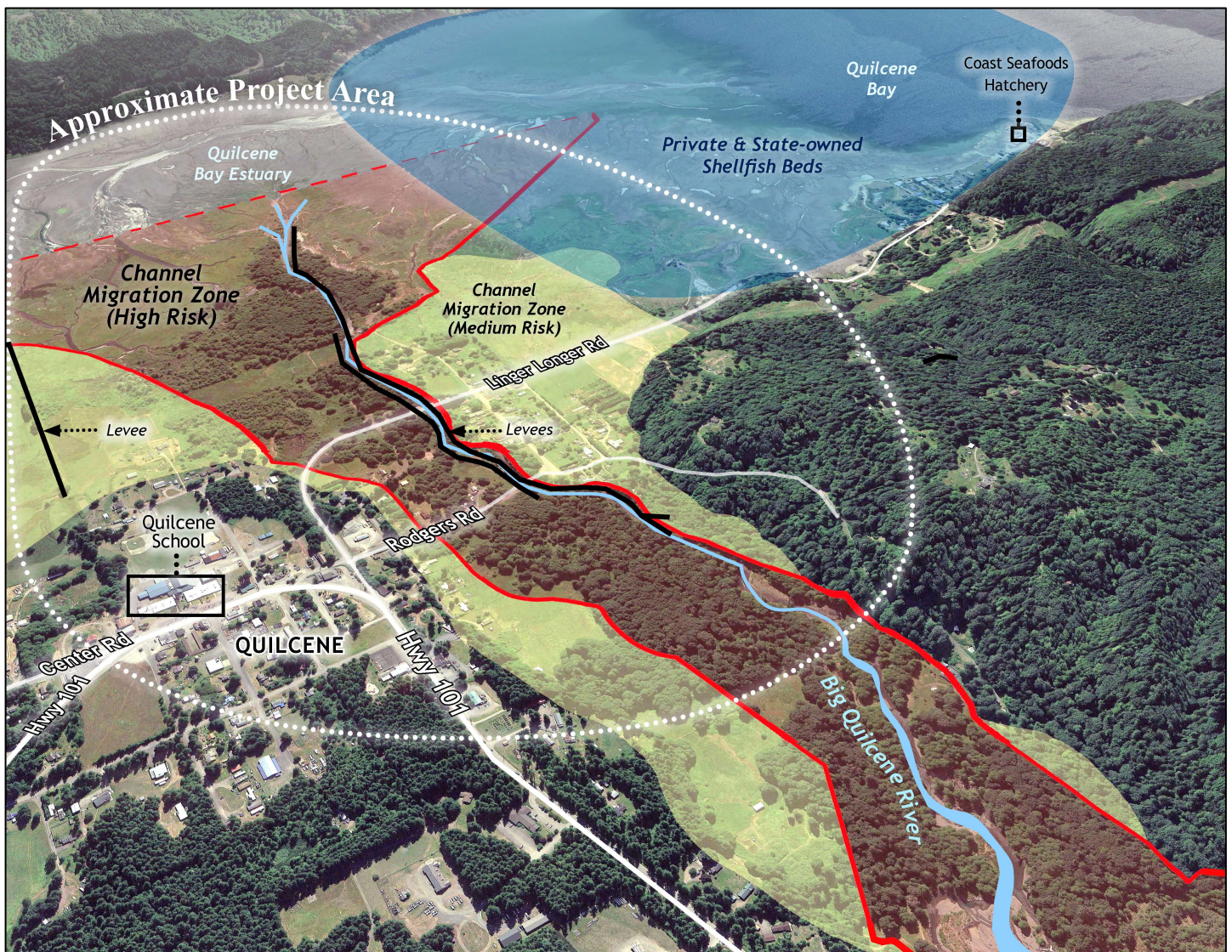
Coast Seafood's hatchery is the second largest employer in Jefferson County, and the largest supplier of juvenile oysters internationally. Coast's hatchery operates 24 hours a day, 365 days a year and uninterrupted employee access is critical to their operation. When Linger Longer Road closes due to Big Quilcene River floods, access is restricted.

The current levees are not structurally sound and fail to offer adequate flood protection.

ESA-listed Hood Canal summer chum need at least 800 additional acres of estuary habitat throughout Hood Canal in order to recover.

Project Outcomes

- Identify and design a suite of actions that increase flood protection, improve ecosystem functions and address other community needs and priorities, including shellfish compatibility, recreational access, education of local students about the natural resources of the river and bay, and economic vitality.
- Acquire 1-3 parcels subject to flooding and demolish structures.
- The design will include up to 1.5 miles of dike and levee setback or removal, and could restore and reconnect natural processes on up to 219 acres of floodplain and estuary, with direct restoration on up to 76 acres – critical habitat for Endangered Hood Canal summer chum.



For more information, contact: Tami Pokorny, 360-379-4498, tpokorny@co.jefferson.wa.us or Mo McBroom, 206-343-4345, mmcbroom@tnc.org

On the web: <http://floodplainsbydesign.org>